

EUREKA Manta™

MULTIPARAMETER SYSTEM



The world's best multiprobe combo – Manta and Amphibian.

HIGHLIGHTS :

- Available Sensors:

Temperature	Depth
Dissolved Oxygen	Turbidity
Conductivity	Level/Stage
pH	Chlorophyll (forthcoming)
ORP	Optical DO NEW!
- Fresh, salt and brackish waters
- Profiling or unattended monitoring
- On-board Memory
- Self-cleaning mechanism (forthcoming)



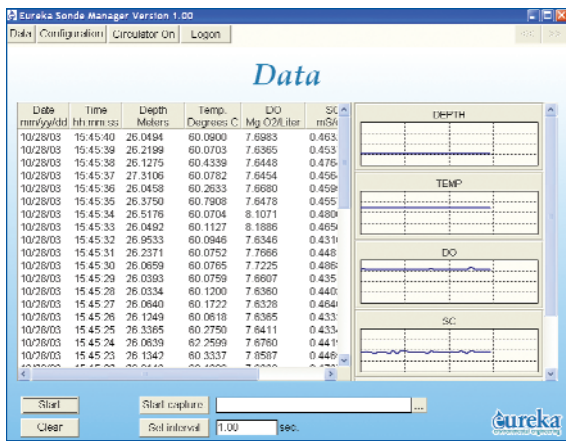
RELIABLE INSTRUMENTATION The Eureka® Manta™ multiprobe is engineered to last for years in the field. Every aspect of the Manta is designed for increased reliability and durability. For example, recessed sensors are less likely to break off; our detachable Cablelock™ system eliminates exposed pins that bend or break; LEDs on the circuit board indicate proper function.

A VARIETY OF FIELD APPLICATIONS Use your Manta in fresh, salt or brackish waters. For profiling or dip-and-read applications, pair the Manta with Eureka's Amphibian™, a Pocket PC based waterproof field display. Since the Manta is already equipped with memory, turn it into a logging device by simply adding a battery pack. For real-time monitoring, connect it to Eureka's satellite telemetry system or an SDI-12 compatible datalogger. You'll extend deployment further with Eureka's unique cleaning mechanism.

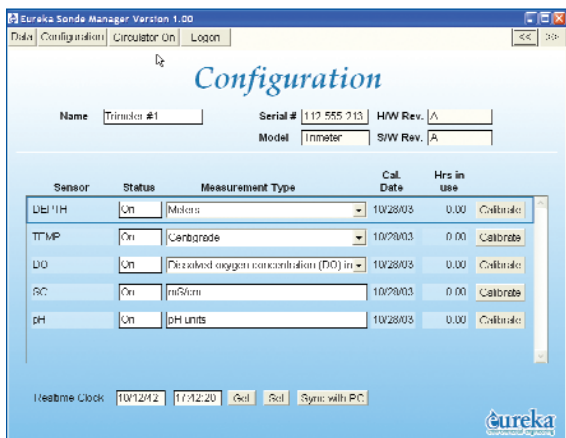
PROVEN SENSOR TECHNOLOGY Manta sensors are chosen for their superior functionality in the field because you need the most accurate and precise data possible. To further increase sensor performance, we separated and isolated the analog and digital circuitry. Where applicable, sensors adhere to specifications as stated by *Standard Methods for Examination of Water and Wastewater 20th Edition*.

FREE, EASY-TO-USE SOFTWARE Eureka's modern, Windows®-based software guides you through setup, calibration and data download processes. The real-time graphing makes it easy for you to visually recognize when your readings have stabilized. The calibration log provides a regulatory record of instrument calibration history.

2113 Wells Branch Pkwy | Suite 4400 | Austin, Texas 78728
512 302-4333 | fax: 512 323-6911 | sales@eurekaenvironmental.com
www.eurekaenvironmental.com



MAIN DATA SCREEN: Free Windows® software is easy-to-use. Quickly and easily view live data, calibrate and setup your instruments, and upload logged data.



CONFIGURATION SCREEN: Change your parameter setup easily, and view the last calibration date.

EUREKA TECHNICAL INNOVATIONS AND ADVANTAGES:

- SNAP-ON DO MEMBRANES – Changing DO membranes is much easier with snap-on caps. They provide uniform stretching for more consistent data and eliminate bubbles and wrinkles.
- EVERLAST™ FLAT GLASS PH SENSOR – Replace the reference solution and not the entire sensor. The sensor lasts for years and the flat glass pH bulb is easy to clean and difficult to break.
- OPEN FLOW CONDUCTIVITY – The open flow design prevents air bubbles from interfering with the reading and allows sediment to fall away from the sensors.
- MCVAN™ ANALITE TURBIDITY – The innovative and practical design provides superior linearity. Mathematical algorithms eliminate sand and similar particles from turbidity calculations.
- ACCURATE AND PRECISE STAGE – The digital pressure transducer is designed for long-term deployment. With an accuracy of ± 0.005 ft, this sensor is guaranteed to stay within specification for up to one year.
- SEPARATE ANALOG AND DIGITAL BOARDS – Isolates the circuitry for more accurate data signals and cuts down on repair costs.
- CLEAR PLASTIC HOUSING – Allows the user to see if the double o-ring seals have been breached. LEDs on the circuit board provide diagnostic and operational information.
- POLYURETHANE CABLES WITH WATER-BLOCK – Cables are substance-filled to prevent water from traveling in the event of a minor cut.
- DETACHABLE CABLELOCK™ SYSTEM – No more pins or connectors that can break. Eureka's system allows cables to be easily changed while maintaining a sealed system with fewer components, reducing maintenance and repair costs.
- FIELD-REPLACEABLE SENSORS – Sensors can be quickly and easily replaced in the field. Internal electronics are protected from exposure.
- COMPREHENSIVE SUPPORT – We offer free phone support, so call us with questions. In the event of a repair, we'll get your instrument fixed within seven business days or provide a free loaner. We'll email you when the instrument arrives, is fixed and is shipped.
- 30 DAY RISK-FREE TRIAL



2113 Wells Branch Pkwy | Suite 4400 | Austin, Texas 78728
 512 302-4333 | fax: 512 323-6911 | sales@eurekaenvironmental.com
www.eurekaenvironmental.com

TYPICAL PERFORMANCE SPECIFICATIONS

Parameter	Range	Resolution	Accuracy
Temperature	-5 °C - 50 °C	0.01 °C	± 0.10 °C
Dissolved Oxygen (Clark cell)	0 - 50 mg/l	0.01 mg/l	± 0.2 mg/l ≤ 20 mg/l ± 0.6 mg/l > 20 mg/l
Dissolved Oxygen (optical)	0 - 25 mg/l	0.01 mg/l	± 1% of reading
Conductivity	0 - 100 mS/cm	4 digits	± 1% of reading
Turbidity	0 - 3000 NTU	0.1 NTU	< 1% of reading to 100 NTU < 3% of reading to 400 NTU < 5% of reading over 400 NTU
pH	2 - 12 units	0.01 units	± 0.2 units
ORP	-999 - 999 mV	1 mV	± 20 mV
Depth	0 - 10 m 0 - 25 m 0 - 50 m 0 - 100 m	0.01 m	0.2% of range
Stage (vented)	0 - 33 feet	0.001 ft	± 0.005 ft

ABOUT EUREKA

Eureka Environmental Engineering was formed in 2002 to provide the finest tools for monitoring our most precious resource – water. Employee-owned and operated, Eureka's professional objective is to ensure that each product sold offers the highest level of value and service possible. Under the guidance of our principals and board of advisors, the company draws on over 200 combined years of industry experience to make your job easier.



The Manta connects to Eureka's Amphibian™ for real-time, profiling applications.

2113 Wells Branch Pkwy | Suite 4400 | Austin, Texas 78728
512 302-4333 | fax: 512 323-6911 | sales@eurekaenvironmental.com
www.eurekaenvironmental.com